



PRODUCT CATALOG

2025





TABLE OF CONTENTS

Our Door Styles	3
Cabinet Features.....	8
Base Cabinets	11
Wall Cabinets.....	14
Glass Doors	18
Pantry & Oven Cabinets.....	20
Bathroom Vanities.....	22
Trim & Accessories.....	24
Our Warranty.....	28



TA Cabinetry is one of the leading providers of high-quality Ready-to-Assemble (RTA) and semi-custom cabinetry, dedicated to offering affordable and stylish solutions for every home. Our extensive product line is designed to meet the diverse needs and tastes of our customers, combining aesthetic appeal with practical functionality.

Founded on the principles of quality and affordability, TA Cabinetry has quickly become a trusted name in the industry. We pride ourselves on our quick lead times, ensuring that our clients receive their products promptly and efficiently. This commitment to timeliness is matched by our unwavering dedication to exceptional customer service. Our knowledgeable and friendly team is always ready to assist, providing expert advice and support to ensure a seamless experience from selection to installation.

Our growth nationwide is a testament to our success and the trust our customers place in us. As we continue to expand, we remain focused on our core values: delivering top-notch products, maintaining competitive pricing, and fostering long-lasting relationships with our clients.

At TA Cabinetry, we believe that everyone deserves a beautiful, functional kitchen or bath. Our mission is to make this a reality for our customers by providing exceptional cabinetry solutions that enhance their living spaces. Join us on our journey as we set new standards in the cabinetry industry, driven by innovation, quality, and customer satisfaction.

CHARLOTTE, NC

1810 W Pointe Dr,
Suite A
Charlotte, NC 28214

CHICAGO, IL

2050 S Mt Prospect Rd,
Suite C
Des Plaines, IL 60018

COLUMBUS, OH

2201 Dividend Dr
Columbus, OH 43228

WASHINGTON, DC

7587 Montevideo Rd
Jessup, MD 20794

www.TACABINETRY.COM



MORE LOCATIONS TO COME!

OUR CABINET LINE

TIMELESS SHAKER SERIES



White (TSW)



Gray (TSG)



Blue (TSB)



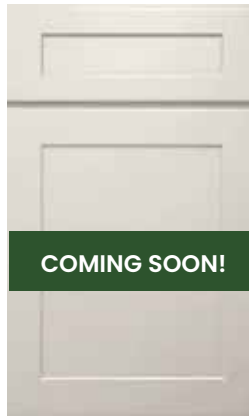
NOSTALGIC



Karamel (TSK)



Charcoal Black (TSC)



Dove (TSD)



Slate Brown (NSB)

CONTEMPORARY SERIES



Dove White (CDW)



Tuscan Green (CTG)



White Oak (CWO)

DORIC SERIES



Beige Gray (DBG)



Charcoal Black (DCB)



 TA CABINETRY



Crafted for elegance, built for durability. Discover timeless style and unbeatable quality, perfect for creating beautiful, functional kitchens that stand the test of time.

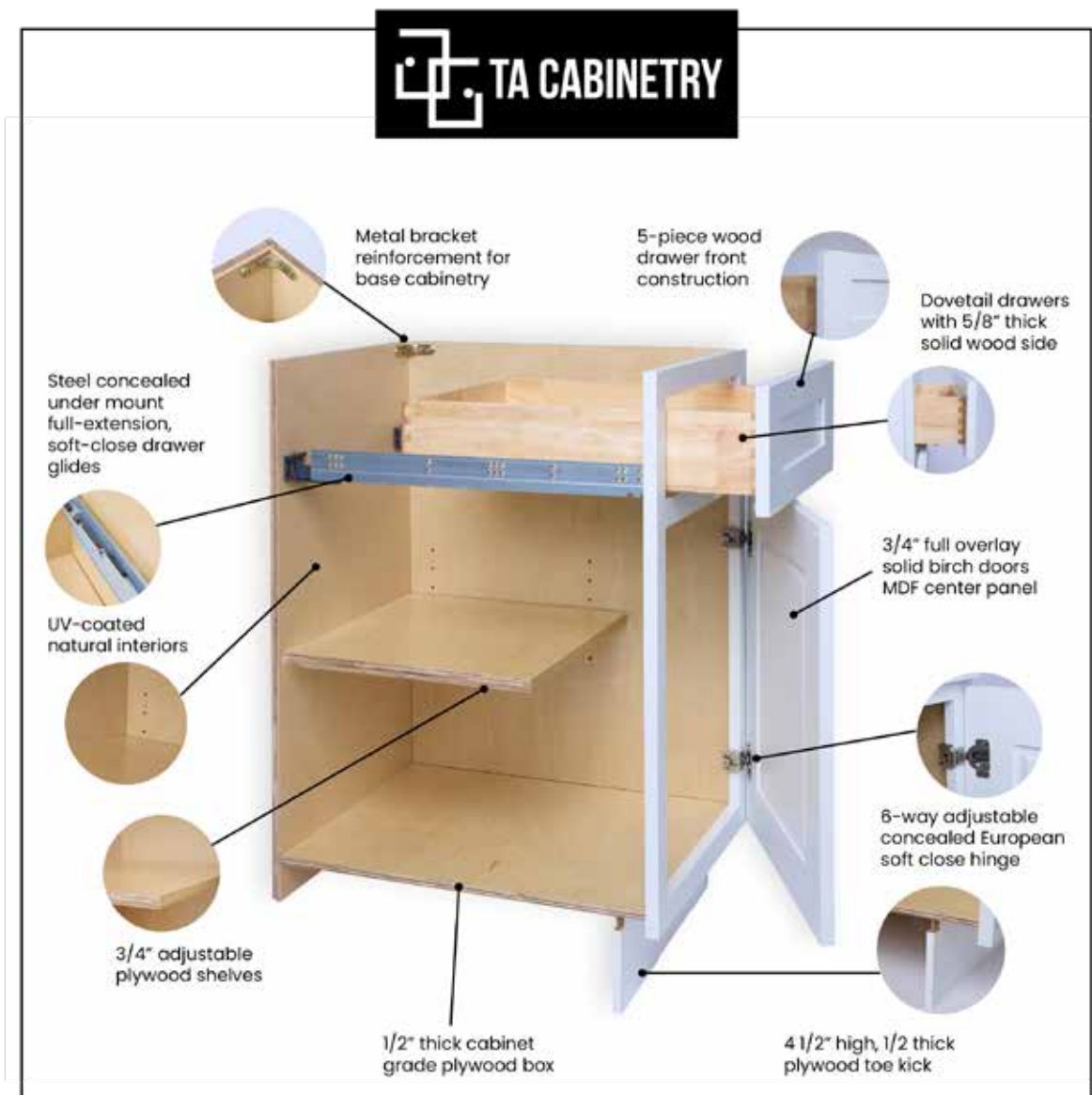




 TA CABINETRY



At TA Cabinetry, we offer factory-direct, all-wood cabinets that combine affordability with exceptional quality. Each unit reflects the craftsmanship and features typically found in custom cabinets, ensuring you get the highest standard at a great value.



All sides are white. For any other color please specify finished end.





BASE CABINETS

SINGLE DOOR/SINGLE DRAWER



One adjustable shelf

ITEM #		W	H	D
B12	cabinet	12	34 1/2	24
	door	11 1/2	22	3/4
	drawer	11 1/2	6 3/4	3/4
B15	cabinet	15	34 1/2	24
	door	14 1/2	22	3/4
	drawer	14 1/2	6 3/4	3/4
B18	cabinet	18	34 1/2	24
	door	17 1/2	22	3/4
	drawer	17 1/2	6 3/4	3/4
B21	cabinet	21	34 1/2	24
	door	20 1/2	22	3/4
	drawer	20 1/2	6 3/4	3/4

DOUBLE DOORS/SINGLE DRAWER



One adjustable shelf

ITEM #		W	H	D
B24	cabinet	24	34 1/2	24
	door	11 3/4	22	3/4
	drawer	23 1/2	6 3/4	3/4
B27	cabinet	27	34 1/2	24
	door	13 1/4	22	3/4
	drawer	26 1/2	6 3/4	3/4
B30	cabinet	30	34 1/2	24
	door	14 3/4	22	3/4
	drawer	29 1/2	6 3/4	3/4
B33	cabinet	33	34 1/2	24
	door	16 1/4	22	3/4
	drawer	31 1/2	6 3/4	3/4
B36	cabinet	36	34 1/2	24
	door	17 3/4	22	3/4
	drawer	35 1/2	6 3/4	3/4

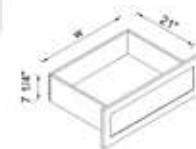
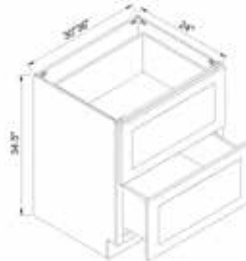
DOUBLE DOORS/DOUBLE DRAWERS



One adjustable shelf

ITEM #		W	H	D
B39	cabinet	39	34 1/2	24
	door	19 1/4	22	3/4
	drawer	19 1/4	6 3/4	3/4
B42	cabinet	42	34 1/2	24
	door	20 3/4	22	3/4
	drawer	20 3/4	6 3/4	3/4

2 DRAWER BASE



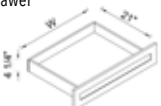
The width of the drawer is 3 1/2" smaller than the cabinet, and the depth is 21", drawer height is 7-1/4"

ITEM #		W	H	D
2DB30	cabinet	30	34 1/2	24
	drawer	29 1/2	14 3/8	3/4
2DB36	cabinet	36	34 1/2	24
	drawer	35 1/2	14 3/8	3/4

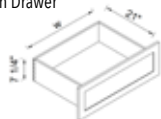
3 DRAWER BASE



Top Drawer



Bottom Drawer



The width of the drawer is 3 1/2" smaller than the cabinet, and the depth is 21"
Top drawer height is 4 1/4",
Bottom drawer height is 7 1/4 "

ITEM #		W	H	D
3DB12	cabinet	12	34 1/2	24
	drawer	11 1/2	10 3/4	3/4
	drawer	11 1/2	6 3/4	3/4
3DB15	cabinet	15	34 1/2	24
	drawer	14 1/2	10 3/4	3/4
	drawer	14 1/2	6 3/4	3/4
3DB18	cabinet	18	34 1/2	24
	drawer	17 1/2	10 3/4	3/4
	drawer	17 1/2	6 3/4	3/4
3DB21	cabinet	21	34 1/2	24
	drawer	20 1/2	10 3/4	3/4
	drawer	20 1/2	6 3/4	3/4
3DB24	cabinet	24	34 1/2	24
	drawer	23 1/2	10 3/4	3/4
	drawer	23 1/2	6 3/4	3/4
3DB27	cabinet	27	34 1/2	24
	drawer	26 1/2	10 3/4	3/4
	drawer	26 1/2	6 3/4	3/4
3DB30	cabinet	30	34 1/2	24
	drawer	29 1/2	10 3/4	3/4
	drawer	29 1/2	6 3/4	3/4
3DB33	cabinet	33	34 1/2	24
	drawer	32 1/2	10 3/4	3/4
	drawer	32 1/2	6 3/4	3/4
3DB36	cabinet	36	34 1/2	24
	drawer	35 1/2	10 3/4	3/4
	drawer	25 1/2	6 3/4	3/4

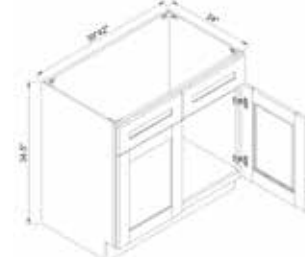
SINK BASE CABINET



1 False Drawer, 2 Doors

ITEM #		W	H	D
SB24	cabinet	24	34 1/2	24
	door	11 3/4	22	3/4
	drawer	23 1/2	6 3/4	3/4
SB27	cabinet	27	34 1/2	24
	door	13 1/4	22	3/4
	drawer	26 1/2	6 3/4	3/4
SB30	cabinet	30	34 1/2	24
	door	14 3/4	22	3/4
	drawer	29 1/2	6 3/4	3/4
SB33	cabinet	33	34 1/2	24
	door	16 1/4	22	3/4
	drawer	31 1/2	6 3/4	3/4
SB36	cabinet	36	34 1/2	24
	door	17 3/4	22	3/4
	drawer	35 1/2	6 3/4	3/4

SINK BASE CABINET

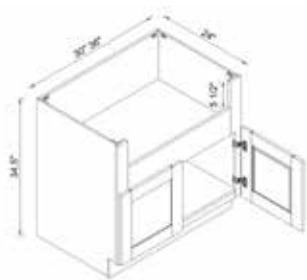


2 False Drawers, 2 Doors

ITEM #		W	H	D
SB39	cabinet	39	34 1/2	24
	door	19 1/4	22	3/4
	drawer	19 1/4	6 3/4	3/4
SB42	cabinet	42	34 1/2	24
	door	20 3/4	22	3/4
	drawer	20 3/4	6 3/4	3/4

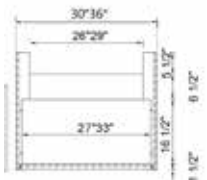
BASE CABINETS

FARM SINK BASE CABINET

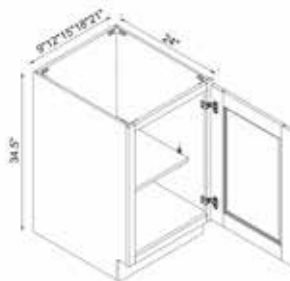


2 Doors

ITEM #		W	H	D
FSB30	cabinet	30	34 1/2	24
	door	14 3/4	19	3/4
FSB36	cabinet	36	34 1/2	24
	door	17 3/4	19	3/4



SINGLE FULL HEIGHT DOOR



One adjustable shelf

ITEM #		W	H	D
B09FHD	cabinet	9	34 1/2	24
	door	8 1/2	29	3/4
B12FHD	cabinet	12	34 1/2	24
	door	11 1/2	29	3/4
B15FHD	cabinet	15	34 1/2	24
	door	14 1/2	29	3/4
B18FHD	cabinet	18	34 1/2	24
	door	17 1/2	29	3/4
B21FHD	cabinet	21	34 1/2	24
	door	20 1/2	29	3/4

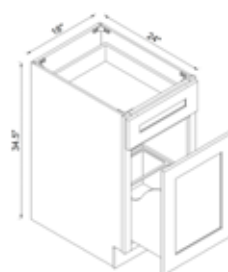
DOUBLE FULL HEIGHT DOORS



One adjustable shelf

ITEM #		W	H	D
B24FHD	cabinet	24	34 1/2	24
	door	11 3/4	29	3/4
B27FHD	cabinet	27	34 1/2	24
	door	13 3/4	29	3/4
B30FHD	cabinet	30	34 1/2	24
	door	14 3/4	29	3/4
B33FHD	cabinet	33	34 1/2	24
	door	16 1/4	29	3/4
B36FHD	cabinet	36	34 1/2	24
	door	17 3/4	29	3/4
B39FHD	cabinet	39	34 1/2	24
	door	19 1/4	29	3/4
B42FHD	cabinet	42	34 1/2	24
	door	20 3/4	29	3/4

WASTEBASKET BASE CABINET



ITEM #		W	H	D
B18-TRASH	cabinet	18	34 1/2	24
	drawer	17 1/2	6 1/2	3/4
	drawer	17 1/2	22 1/2	3/4
Trashcan		14	17 1/2	9 3/4



The B18-Trash cabinet includes a trash insert.

Trash bin sold separately. For B18-TRASH, purchase two trash bins. Price is per bin.

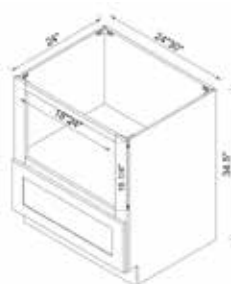
SPICE RACK BASE



ITEM #		W	H	D
B06SR	cabinet	6	34 1/2	24
	drawer	5 1/2	29	3/4
B09SR	cabinet	9	34 1/2	24
	drawer	8 1/2	29	3/4

Door is full filler, not a standard door.

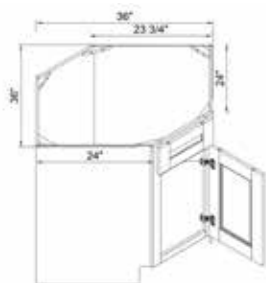
MICROWAVE BASE CABINET



ITEM #		W	H	D
MB24	cabinet	24	34 1/2	24
	drawer	23 1/2	10 3/4	3/4
MB30	cabinet	30	34 1/2	24
	drawer	29 1/2	10 3/4	3/4

1 Drawer
Matching, finished interior

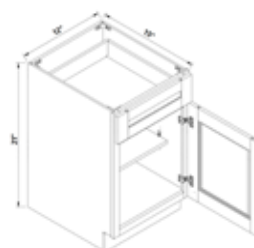
DIAGONAL SINK BASE CABINET



ITEM #		W	H	D
DSB36	cabinet	36	34 1/2	24
	door	15 1/4	29 1/4	3/4
	drawer	15 1/4	6 3/4	3/4

1 False Drawer, 1 Door

MINI BASE

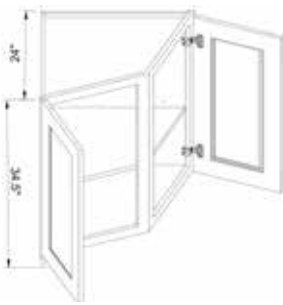


ITEM #		W	H	D
MINI	cabinet	12	21	15
	door	11 1/2	11 3/4	3/4
	drawer	11 1/2	6	3/4

One adjustable shelf

BASE CABINETS

ANGLE BASE CABINET - DOUBLE DOOR



ITEM #		W	H	D
BAE24	cabinet	24	34 1/2	24
	door	17 1/4	29 1/4	3/4

One adjustable shelf

ANGLE BASE CABINET - SINGLE DOOR

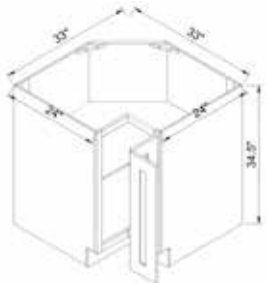


ITEM #		W	H	D
BAE12L	cabinet	12	34 1/2	24
	door	16 1/4	29 1/4	3/4

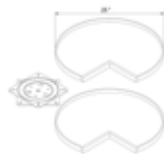
ITEM #		W	H	D
BAE12R	cabinet	12	34 1/2	24
	door	16 1/4	29 1/4	3/4

One adjustable shelf

LAZY SUSAN BASE CABINET



ITEM #		W	H	D
BER33	cabinet	33	34 1/2	24
	door	7 3/4	29 1/4	3/4
LS-Wood33		25		

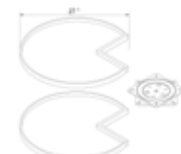


Includes shelves only.
Please order LS-Wood33 to add Lazy Susans.
2 trays sold when ordering LSWOOD33.

LAZY SUSAN BASE CABINET

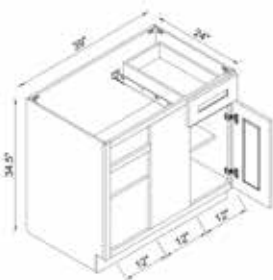


ITEM #		W	H	D
BER36	cabinet	36	34 1/2	24
	door	10 3/4	29 1/4	3/4
LS-Wood36		27		



Includes shelves only.
Please order LS-Wood33 to add Lazy Susans.
2 trays sold when ordering LSWOOD36.

BLIND CORNER BASE CABINET



ITEM #		W	H	D
BBC42/45-39	cabinet	39	34 1/2	24
	door	14 1/2	22	3/4
	drawer	14 1/2	6 3/4	3/4

Install range: 39" 42"-45"

Indicate left or right, with a minimum pull of 3" from the wall and a maximum pull of 6" during installation

BLIND CORNER BASE CABINET



ITEM #		W	H	D
BBC45/48-42	cabinet	42	34 1/2	24
	door	17 1/2	22	3/4
	drawer	17 1/2	6 3/4	3/4

Install range: 42" 45"-48"

Indicate left or right, with a minimum pull of 3" from the wall and a maximum pull of 6" during installation



WALL CABINETS



30"H SINGLE DOOR



Two adjustable shelves

ITEM #		W	H	D
W0930	cabinet	9	30	12
	door	8 1/2	29	3/4
W1230	cabinet	12	30	12
	door	11 1/2	29	3/4
W1530	cabinet	15	30	12
	door	14 1/2	29	3/4
W1830	cabinet	18	30	12
	door	17 1/2	29	3/4
W2130	cabinet	21	30	12
	door	20 1/2	29	3/4

30"H DOUBLE DOORS



Two adjustable shelves

ITEM #		W	H	D
W2430	cabinet	24	30	12
	door	11 1/4	29	3/4
W2730	cabinet	27	30	12
	door	13 1/4	29	3/4
W3030	cabinet	30	30	12
	door	14 3/4	29	3/4
W3330	cabinet	33	30	12
	door	16 1/4	29	3/4
W3630	cabinet	36	30	12
	door	17 3/4	29	3/4
W3930	cabinet	39	30	12
	door	19 1/4	29	3/4
W4230	cabinet	42	30	12
	door	20 3/4	29	3/4

36"H SINGLE DOOR



Two adjustable shelves

ITEM #		W	H	D
W0936	cabinet	9	36	12
	door	8 1/2	35	3/4
W1236	cabinet	12	36	12
	door	11 1/2	35	3/4
W1536	cabinet	15	36	12
	door	14 1/2	35	3/4
W1836	cabinet	18	36	12
	door	17 1/2	35	3/4
W2136	cabinet	21	36	12
	door	20 1/2	35	3/4

36"H DOUBLE DOORS

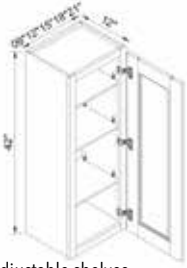


Two adjustable shelves

ITEM #		W	H	D
W2436	cabinet	24	36	12
	door	11 1/4	35	3/4
W2736	cabinet	27	36	12
	door	13 1/4	35	3/4
W3036	cabinet	30	36	12
	door	14 3/4	35	3/4
W3336	cabinet	33	36	12
	door	16 1/4	35	3/4
W3636	cabinet	36	36	12
	door	17 3/4	35	3/4
W3936	cabinet	39	36	12
	door	19 1/4	35	3/4
W4236	cabinet	42	36	12
	door	20 3/4	35	3/4

WALL CABINETS

42"H SINGLE DOOR



Three adjustable shelves

ITEM #		W	H	D
W0942	cabinet	9	42	12
	door	8 1/2	41	3/4
W1242	cabinet	12	42	12
	door	11 1/2	41	3/4
W1542	cabinet	15	42	12
	door	14 1/2	41	3/4
W1842	cabinet	18	42	12
	door	17 1/2	41	3/4
W2142	cabinet	21	42	12
	door	20 1/2	41	3/4

42"H DOUBLE DOORS



Three adjustable shelves

ITEM #		W	H	D
W2442	cabinet	24	42	12
	door	11 3/4	41	3/4
W2742	cabinet	27	42	12
	door	13 1/4	41	3/4
W3042	cabinet	30	42	12
	door	14 3/4	41	3/4
W3342	cabinet	33	42	12
	door	16 1/4	41	3/4
W3642	cabinet	36	42	12
	door	17 3/4	41	3/4
W3942	cabinet	39	42	12
	door	19 1/4	41	3/4
W4242	cabinet	42	42	12
	door	20 3/4	41	3/4

12"H DOUBLE DOORS



ITEM #		W	H	D
W2412	cabinet	24	12	12
	door	11 3/4	11	3/4
W3012	cabinet	30	12	12
	door	14 3/4	11	3/4
W3312	cabinet	33	12	12
	door	16 1/4	11	3/4
W3612	cabinet	36	12	12
	door	17 3/4	11	3/4

15"H DOUBLE DOORS



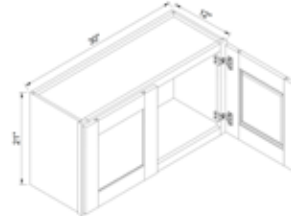
ITEM #		W	H	D
W3015	cabinet	30	15	12
	door	14 3/4	14	3/4
W3315	cabinet	33	15	12
	door	16 1/4	14	3/4
W3615	cabinet	36	15	12
	door	17 3/4	14	3/4

18"H DOUBLE DOORS



ITEM #		W	H	D
W2418	cabinet	24	18	12
	door	11 3/4	17	3/4
W3018	cabinet	30	18	12
	door	14 3/4	17	3/4
W3318	cabinet	33	18	12
	door	16 1/4	17	3/4
W3618	cabinet	36	18	12
	door	17 3/4	17	3/4

21"H DOUBLE DOORS



ITEM #		W	H	D
W3021	cabinet	30	21	12
	door	14 3/4	20	3/4

24"H DOUBLE DOORS



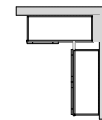
Two adjustable shelves

ITEM #		W	H	D
W3024	cabinet	30	24	12
	door	14 3/4	23	3/4
W3324	cabinet	33	24	12
	door	16 1/4	23	3/4
W3624	cabinet	36	24	12
	door	17 3/4	23	3/4

30"H BLIND CORNER



ITEM #		W	H	D
WBC2730	cabinet	27	30	12
	door	11	29	3/4
WBC3030	cabinet	30	30	12
	door	14	29	3/4
WBC3630	cabinet	36	30	12
	door	20	29	3/4

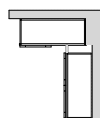


Wall blind cabinets must be installed flush against the wall and cannot be pulled forward.

36"H BLIND CORNER



ITEM #		W	H	D
WBC2736	cabinet	27	36	12
	door	11	35	3/4
WBC3036	cabinet	30	36	12
	door	14	35	3/4
WBC3636	cabinet	36	36	12
	door	20	35	3/4

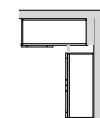


Wall blind cabinets must be installed flush against the wall and cannot be pulled forward.

42"H BLIND CORNER



ITEM #		W	H	D
WBC2742	cabinet	27	42	12
	door	11	41	3/4
WBC3042	cabinet	30	42	12
	door	14	41	3/4
WBC3642	cabinet	36	42	12
	door	20	41	3/4



Wall blind cabinets must be installed flush against the wall and cannot be pulled forward.

WALL CABINETS

30"H 36"H MICROWAVE CABINET



ITEM #		W	H	D
WMO3030	cabinet	30	30	12
	door	14 ¾	9 ½	¾
WMO3036	cabinet	30	36	12
	door	14 ¾	15 ½	¾

Front opening is 27" x 16"
Finished interior and shelves.

42"H MICROWAVE CABINET



ITEM #		W	H	D
WMO3042	cabinet	30	42	12
	door	14 ¾	21 ½	¾

Front opening is 27" x 16"
Finished interior and shelves.

12"H DOUBLE DOORS - 24"D



ITEM #		W	H	D
W301224	cabinet	30	12	24
	door	14 ¾	11	¾
W331224	cabinet	33	12	24
	door	16 ¾	11	¾
W361224	cabinet	36	12	24
	door	17 ¾	11	¾

15"H DOUBLE DOORS - 24"D



ITEM #		W	H	D
W301524	cabinet	30	15	24
	door	14 ¾	14	¾
W331524	cabinet	33	15	24
	door	16 ¾	14	¾
W361524	cabinet	36	15	24
	door	17 ¾	14	¾

18"H DOUBLE DOORS - 24"D



ITEM #		W	H	D
W301824	cabinet	30	18	24
	door	14 ¾	17	¾
W331824	cabinet	33	18	24
	door	16 ¾	17	¾
W361824	cabinet	36	18	24
	door	17 ¾	17	¾

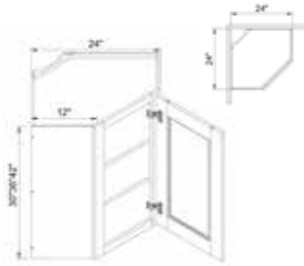
24"H DOUBLE DOORS - 24"D



ITEM #		W	H	D
W302424	cabinet	30	24	24
	door	14 ¾	23	¾
W332424	cabinet	33	24	24
	door	16 ¾	23	¾
W362424	cabinet	36	24	24
	door	17 ¾	23	¾

One adjustable shelf

DIAGONAL CORNER



ITEM #		W	H	D
WDC2430	cabinet	24	30	12
	door	15 ¼	29	¾
WDC2436	cabinet	24	36	12
	door	15 ¼	35	¾
WDC2442	cabinet	24	42	12
	door	15 ¼	41	¾

H 30" comes with 2 sets of hinge holes
H 36" & H 42" come with 3 sets of hinge holes
H 30" & 36" have 2 adjustable shelves
H 42" has 3 adjustable shelves

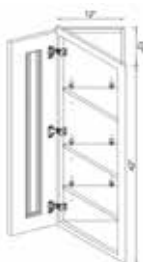
30"H 36"H ANGLE CABINET



ITEM #		W	H	D
WAE1230	cabinet	12	30	12
	door	9 ¼	29	¾
WAE1236	cabinet	12	36	12
	door	9 ¼	35	¾

Two adjustable shelves

42"H ANGLE CABINET



ITEM #		W	H	D
WAE1242	cabinet	12	42	12
	door	9 ¼	41	¾

Three adjustable shelves

PIE CUT CORNER CABINET

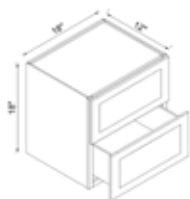


ITEM #		W	H	D
WPC2430	cabinet	24	30	24
	door	10 ¾	29	¾
WPC2436	cabinet	24	36	24
	door	10 ¾	35	¾
WPC2442	cabinet	24	42	24
	door	10 ¾	41	¾

H 30" comes with 2 sets of hinge holes
H 36" & H 42" come with 3 sets of hinge holes
H 30" & 36" have 2 adjustable shelves
H 42" has 3 adjustable shelves

WALL CABINETS

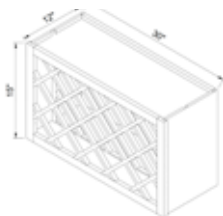
WALL DRAWER CABINET



ITEM #		W	H	D
W2D1818	cabinet	18	18	12
	drawer	17 1/2	8 1/4	3/4

Comes with soft close glides.

WALL WINE RACK



ITEM #		W	H	D
WRC3015	cabinet	30	15	12

Finished interior.

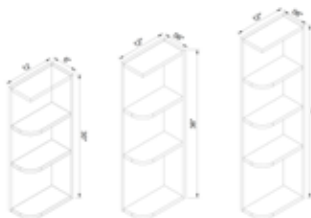
WALL WINE RACK



ITEM #		W	H	D
WXC1818	cabinet	18	18	12

Finished interior.

END SHELF



ITEM #		W	H	D
WEO630	cabinet	6	30	12
WEO636	cabinet	6	36	12
WEO642	cabinet	6	42	12

For the wall open-end shelf cabinet, please specify whether the open end is on the left or right.

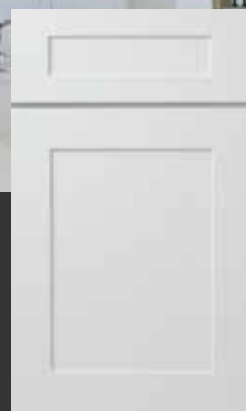
Finished interior.



GLASS DOOR WALL CABINETS



Extend kitchen cabinets to the ceiling to maximize storage space and create a sleek, intentional look that utilizes full vertical potential.



30"H SINGLE GLASS DOOR



ITEM #		W	H	D
W1530GD	cabinet	15	30	12
	door	14 1/2	29	3/4
W1830GD	cabinet	18	30	12
	door	17 1/2	29	3/4

Glass cabinets come with clear glass doors, glass shelves, and a matching finished interior.

Two adjustable shelves

30"H DOUBLE GLASS DOORS



ITEM #		W	H	D
W2430	cabinet	24	30	12
	door	11 1/4	29	3/4
W3030	cabinet	30	30	12
	door	14 3/4	29	3/4
W3630	cabinet	36	30	12
	door	17 3/4	29	3/4

Glass cabinets come with clear glass doors, glass shelves, and a matching finished interior.

Two adjustable shelves

36"H SINGLE GLASS DOOR



ITEM #		W	H	D
W1536	cabinet	15	36	12
	door	14 1/2	35	3/4
W1836	cabinet	18	36	12
	door	17 1/2	35	3/4

Glass cabinets come with clear glass doors, glass shelves, and a matching finished interior.

Two adjustable shelves

36"H DOUBLE GLASS DOORS



ITEM #		W	H	D
W2436	cabinet	24	36	12
	door	11 1/4	35	3/4
W3036	cabinet	30	36	12
	door	14 3/4	35	3/4
W3636	cabinet	36	36	12
	door	17 3/4	35	3/4

Glass cabinets come with clear glass doors, glass shelves, and a matching finished interior.

Two adjustable shelves

GLASS DOOR WALL CABINETS

42"H SINGLE GLASS DOOR



ITEM #		W	H	D
W1542GD	cabinet	15	42	12
	door	14 1/2	41	3/4
W1842GD	cabinet	18	42	12
	door	17 1/2	41	3/4

Glass cabinets come with clear glass doors, glass shelves, and a matching finished interior.

Three adjustable shelves

42"H DOUBLE GLASS DOORS

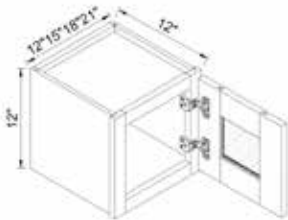


ITEM #		W	H	D
W2442GD	cabinet	24	42	12
	door	11 3/4	41	3/4
W3042GD	cabinet	30	42	12
	door	14 3/4	41	3/4
W3642GD	cabinet	36	42	12
	door	17 3/4	41	3/4

Glass cabinets come with clear glass doors, glass shelves, and a matching finished interior.

Three adjustable shelves

12"H SINGLE GLASS DOOR



ITEM #		W	H	D
W1212GD	cabinet	12	12	12
	door	11 1/2	11	3/4
W1512GD	cabinet	15	12	12
	door	14 1/2	11	3/4
W1812GD	cabinet	18	12	12
	door	17 1/2	11	3/4
W2112GD	cabinet	21	12	12
	door	20 1/2	11	3/4

Glass cabinets come with clear glass doors, glass shelves, and a matching finished interior.

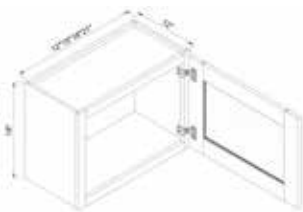
12"H DOUBLE GLASS DOORS



Glass cabinets come with clear glass doors, glass shelves, and a matching finished interior.

ITEM #		W	H	D
W2412GD	cabinet	24	12	12
	door	11 3/4	11	3/4
W2712GD	cabinet	27	12	12
	door	13 1/4	11	3/4
W3012GD	cabinet	30	12	12
	door	14 3/4	11	3/4
W3312GD	cabinet	33	12	12
	door	16 1/4	11	3/4
W3612GD	cabinet	36	12	12
	door	17 3/4	11	3/4

18"H SINGLE GLASS DOOR



ITEM #		W	H	D
W1218GD	cabinet	12	18	12
	door	11 1/2	17	3/4
W1518GD	cabinet	15	18	12
	door	14 1/2	17	3/4
W1818GD	cabinet	18	18	12
	door	17 1/2	17	3/4
W2118GD	cabinet	21	18	12
	door	20 1/2	17	3/4

Glass cabinets come with clear glass doors, glass shelves, and a matching finished interior.

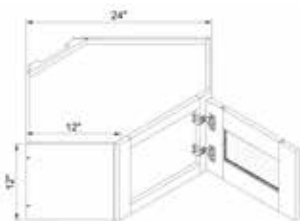
18"H DOUBLE GLASS DOORS



Glass cabinets come with clear glass doors, glass shelves, and a matching finished interior.

ITEM #		W	H	D
W2418GD	cabinet	24	18	12
	door	11 3/4	17	3/4
W2718GD	cabinet	27	18	12
	door	13 1/4	17	12
W3018GD	cabinet	30	18	12
	door	14 3/4	17	3/4
W3318GD	cabinet	33	18	12
	door	16 1/4	17	3/4
W3618GD	cabinet	36	18	12
	door	17 3/4	17	3/4

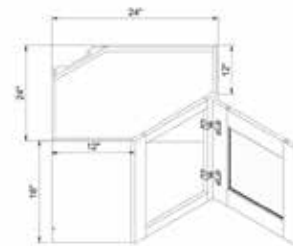
12"H DIAGONAL CORNER SINGLE GLASS DOOR



ITEM #		W	H	D
WDC2412GD	cabinet	24	12	12
	door	15 1/4	11	3/4

Glass cabinets come with clear glass doors, glass shelves, and a matching finished interior.

18"H DIAGONAL CORNER SINGLE GLASS DOOR



ITEM #		W	H	D
WDC2418GD	cabinet	24	18	12
	door	15 1/4	17	3/4

Glass cabinets come with clear glass doors, glass shelves, and a matching finished interior.

30"H DIAGONAL CORNER SINGLE GLASS DOOR



ITEM #		W	H	D
WDC243012GD	cabinet	24	30	12
	door	15 1/4	29	3/4

Glass cabinets come with clear glass doors, glass shelves, and a matching finished interior.

Two adjustable shelves

36"H, 42"H DIAGONAL CORNER SINGLE GLASS DOOR



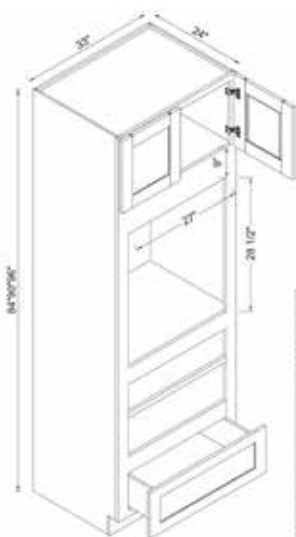
ITEM #		W	H	D
W2436GD	cabinet	24	18	12
	door	11 3/4	17	3/4
W2442GD	cabinet	27	18	12
	door	13 1/4	17	3/4

Glass cabinets come with clear glass doors, glass shelves, and a matching finished interior.

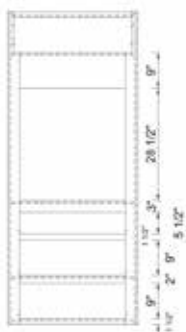
Three adjustable shelves

PANTRY & OVEN CABINETS

OVEN CABINET

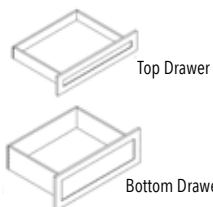


ITEM #		W	H	D
OC338424	cabinet	33	84	24
	door	16 1/4	11	3/4
	drawer	32 1/2	6 3/4	3/4
OC339024	cabinet	33	90	24
	door	16 1/4	17	3/4
	drawer	32 1/2	6 3/4	3/4
OC339624*	cabinet	33	96	24
	door	16 1/4	23	3/4
	drawer	32 1/2	6 3/4	3/4



Currently set up for a double oven; simply remove the rails before installation. For single oven use, please order the top and bottom drawers.

*OC339624 has one shelf in the upper cabinet.



ITEM #	W	H	D
OCC33D-TOP	26 1/2	4 1/4	21
OCC33D-BOTTOM	26 1/2	7 1/4	21

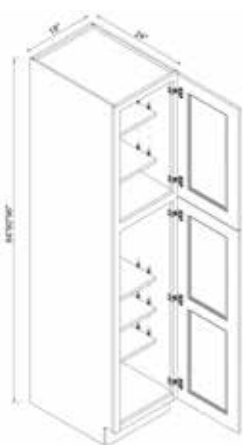
TALL PANTRY DOUBLE DOOR



ITEM #		W	H	D
TP248424	cabinet	24	84	24
	door	11 3/4	49 1/4	3/4
	door	11 3/4	29	3/4
TP249024	cabinet	24	90	24
	door	11 3/4	49 1/4	3/4
	door	11 3/4	35	3/4
TP249624	cabinet	24	96	24
	door	11 3/4	49 1/4	3/4
	door	11 3/4	41	3/4
TP308424	cabinet	30	84	24
	door	14 3/4	49 1/4	3/4
	door	14 3/4	29	3/4
TP309024	cabinet	30	90	24
	door	14 3/4	49 1/4	3/4
	door	14 3/4	35	3/4
TP309624	cabinet	30	96	24
	door	14 3/4	49 1/4	3/4
	door	14 3/4	41	3/4

H84" & H90" have five adjustable shelves, H96" has six adjustable shelves.

TALL PANTRY SINGLE DOOR



ITEM #		W	H	D
TP188424	cabinet	18	84	24
	door	17 1/2	49 1/4	3/4
	door	17 1/2	29	3/4
TP189024	cabinet	18	90	24
	door	17 1/2	49 1/4	3/4
	door	17 1/2	35	3/4
TP189624	cabinet	18	96	24
	door	17 1/2	49 1/4	3/4
	door	17 1/2	41	3/4

H84" & H90" have five adjustable shelves, H96" has six adjustable shelves.



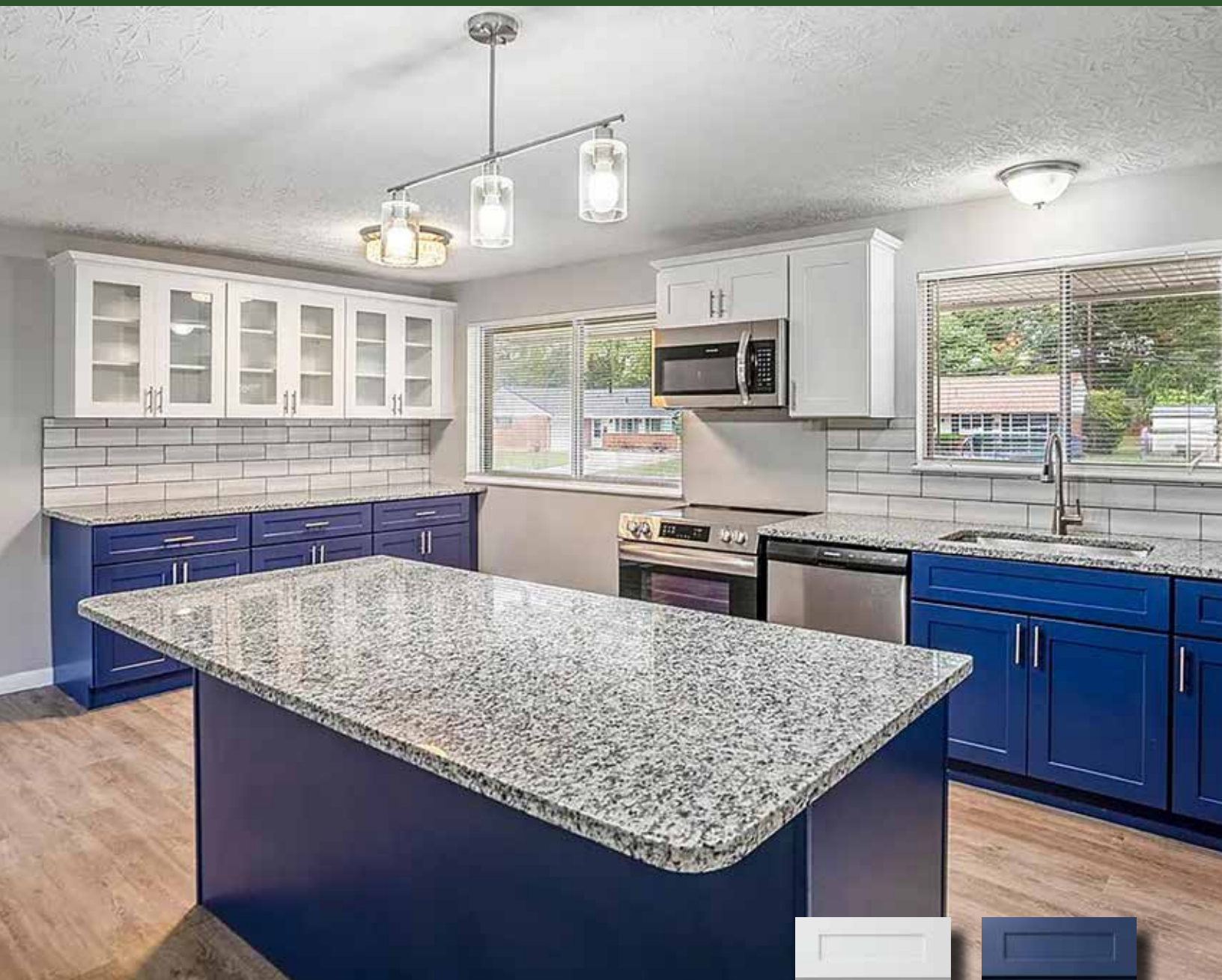
CHARLOTTE, NC
1810 W Pointe Dr,
Suite A
Charlotte, NC 28214

CHICAGO, IL
2050 S Mt Prospect Rd,
Suite C
Des Plaines, IL 60018

COLUMBUS, OH
2201 Dividend Dr,
Columbus, OH 43228

WASHINGTON, DC
7587 Montevideo Rd
Jessup, MD 20794

MORE LOCATIONS TO COME!



Create visual depth by strategically layering contrasting cabinet colors. Pair rich, dark island cabinets with lighter perimeter cabinets to add dimension, or introduce an unexpected accent color that complements your primary palette.

BATHROOM VANITIES



Our high-quality Karamel vanity cabinets are designed to combine organic style with functionality, perfect for a relaxing spa-like atmosphere.

BATHROOM VANITIES

3 DRAWER VANITY BASE



The width of the drawer is 3 1/2" smaller than the cabinet, and the depth is 18"
The upper drawer height is 4 1/4", and the lower drawer height is 7 1/4"

ITEM #		W	H	D
VDB12	cabinet	12	34 1/2	21
	bottom	11 1/2	10 3/4	3/4
	top	11 1/2	6 3/4	3/4
VDB15	cabinet	15	34 1/2	21
	bottom	14 1/2	10 3/4	3/4
	top	14 1/2	6 3/4	3/4
VDB18	cabinet	18	34 1/2	21
	bottom	17 1/2	10 3/4	3/4
	top	17 1/2	6 3/4	3/4
VDB21	cabinet	21	34 1/2	21
	bottom	20 1/2	10 3/4	3/4
	top	20 1/2	6 3/4	3/4
VDB24	cabinet	24	34 1/2	21
	bottom	23 1/2	10 3/4	3/4
	top	23 1/2	6 3/4	3/4

VANITY SINK BASE DOUBLE DOORS



1 False Drawer/ 2 Doors

ITEM #		W	H	D
VSB24	cabinet	24	34 1/2	21
	door	11 3/4	22	3/4
	drawer	23 1/2	6 3/4	3/4
VSB27	cabinet	27	34 1/2	21
	door	13 3/4	22	3/4
	drawer	26 1/2	6 3/4	3/4
VSB30	cabinet	30	34 1/2	21
	door	14 3/4	22	3/4
	drawer	29 1/2	6 3/4	3/4
VSB33	cabinet	33	34 1/2	21
	door	16 3/4	22	3/4
	drawer	32 1/2	6 3/4	3/4
VSB36	cabinet	36	34 1/2	21
	door	17 3/4	22	3/4
	drawer	35 1/2	6 3/4	3/4

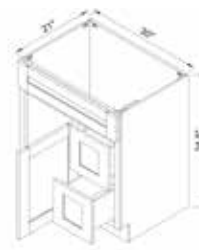
30"W VANITY SINK BASE COMBO - LEFT



ITEM #		W	H	D
VSD30L	cabinet	30	34 1/2	21
	door	17 1/2	22	3/4
	false drawer	29 1/2	6 3/4	3/4
	drawers	11 1/2	10 3/4	3/4

2 Drawers / 1 False Drawer/ 1 Door

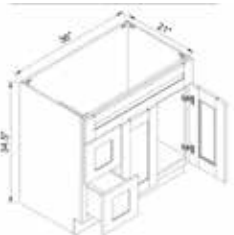
30"W VANITY SINK BASE COMBO - RIGHT



ITEM #		W	H	D
VSD30R	cabinet	30	34 1/2	21
	door	17 1/2	22	3/4
	false drawer	29 1/2	6 3/4	3/4
	drawers	11 1/2	10 3/4	3/4

2 Drawers / 1 False Drawer/ 1 Door

36"W VANITY SINK BASE COMBO - LEFT



ITEM #		W	H	D
VSD36L	cabinet	36	34 1/2	21
	door	11 3/4	22	3/4
	false drawer	35 1/2	6 3/4	3/4
	drawers	11 1/2	10 3/4	3/4

2 Drawers / 1 False Drawer/ 2 Doors

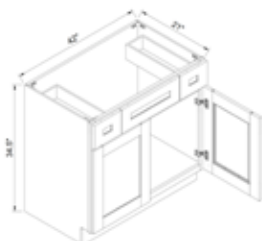
36"W VANITY SINK BASE COMBO - RIGHT



ITEM #		W	H	D
VSD36R	cabinet	36	34 1/2	21
	door	11 3/4	22	3/4
	false drawer	35 1/2	6 3/4	3/4
	drawers	11 1/2	10 3/4	3/4

2 Drawers / 1 False Drawer/ 2 Doors

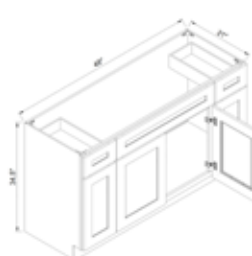
42"W VANITY SINK BASE COMBO



ITEM #		W	H	D
VSD42	cabinet	42	34 1/2	21
	door	20 3/4	22	3/4
	drawer	11 1/2	6 3/4	3/4
	false drawer	18 1/4	6 3/4	3/4

2 Drawers / 1 False Drawer/ 2 Doors

48"W VANITY SINK BASE COMBO

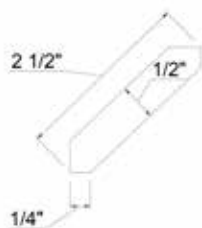


ITEM #		W	H	D
VSD48	cabinet	48	34 1/2	21
	side doors	11 1/2	22	3/4
	middle doors	11 3/4	22	3/4
	side drawers	11 1/2	6 3/4	3/4
	false drawer	23 1/2	6 3/4	3/4

2 Drawers / 1 False Drawer/ 4 Doors

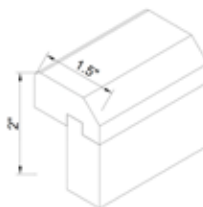
TRIM & ACCESSORIES

ANGLE CROWN MOLDING



ITEM #	W	H	D
ACM8	96	2 1/2	1/2

SHAKER LIGHT RAIL MOLDING



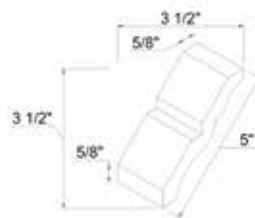
ITEM #	W	H	D
ALRM 8	96	2	1 1/2

BATTEN MOLDING



ITEM #	W	H	D
BAM8	96	3/4	1/4

DECORATIVE CROWN MOLDING



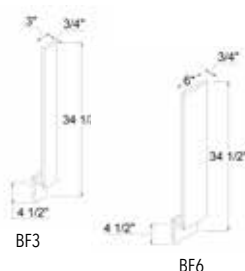
PRODUCT #	W	H	D
BCM8	5	96	3/4

CROWN MOLDING



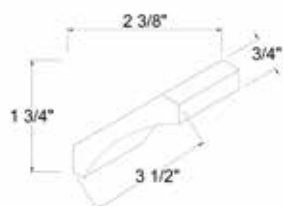
ITEM #	W	H	D
CM8	96	2 7/8	3/4

BASE FILLER



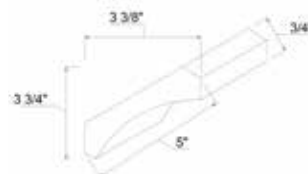
ITEM #	W	H	D
BF3	3	34 1/2	3/4
BF6	6	34 1/2	3/4

CROWN COVE MOLDING - 3.5"



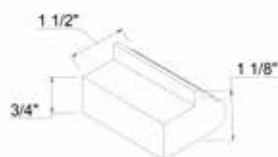
ITEM #	W	H	D
COV3.5	3 1/2	96	3/4

CROWN COVE MOLDING - 5"



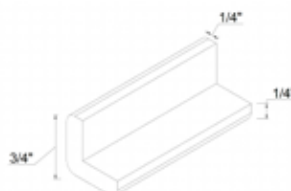
ITEM #	W	H	D
COV5	96	5	3/4

LIGHT RAIL MOLDING



ITEM #	W	H	D
LRM8	96	1 1/2	1 1/8

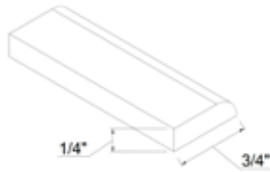
OUTSIDE CORNER MOLDING



ITEM #	W	H	D
OCM8	3/4	96	3/4

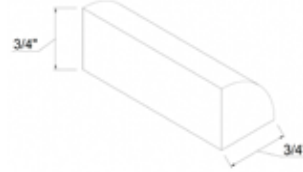
TRIM & ACCESSORIES

SCRIBE MOLDING



ITEM #	W	H	D
SM8	96	3/4	1/4

QUARTER ROUND



ITEM #	W	H	D
QR8	96	3/4	3/4

FURNITURE BASE MOLDING



ITEM #	W	H	D
FB8	96	4 1/2	3/4

FINISHED TOE KICK



ITEM #	W	H	D
TK8	4 1/2	96	1/4

DECORATIVE CORBEL



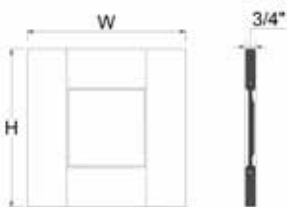
ITEM #	W	H	D
MCB	3 1/2	12 1/4	8

SQUARE DECORATIVE LEG



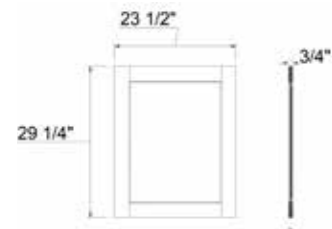
ITEM #	W	H	D
SQDL	3	34 1/2	3

WALL END DECORATIVE PANEL



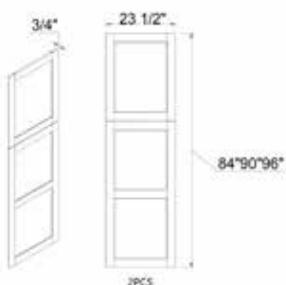
ITEM #	W	H	D
WEDP12	11 1/2	11	3/4
WEDP30	11 1/2	19	3/4
WEDP36	11 1/2	35	3/4
WEDP42	11 1/2	41	3/4
SP	11	15	3/4

BASE DECORATIVE END PANEL



ITEM #	W	H	D
BEDP	23 1/2	29 1/4	3/4

TALL END DECORATIVE PANEL



ITEM #	W	H	D
TEDP2484	23 1/2	78 1/4	3/4
TEDP2490	23 1/2	84 1/4	3/4
TEDP2496	23 1/2	90 1/4	3/4

SHELF PANEL



PRODUCT #	W	H	D
BP2496.75	24	96	3/4
BP4896.75	48	96	3/4

TRIM & ACCESSORIES

ISLAND PANEL



ITEM #	W	H	D
BP4296.25	42	96	1/4

SKIN VENEER PANELS



ITEM #	W	H	D
BSV (base)	23 1/4	34 1/2	1/4
TSV (tall)	23 1/4	96	1/4
WSV30 (wall)	11 1/4	30	1/4
WSV36 (wall)	11 1/4	36	1/4
WSV42 (wall)	11 1/4	42	1/4

DISHWASHER RETURN PANEL



ITEM #	W	H	D
DWR3	24	34 1/2	1/2

REFRIGERATOR RETURN PANEL



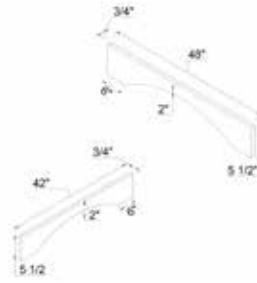
ITEM #	W	H	D
REF2496-1.5	24	96	1/2
REF2796-1.5	27	96	1/2

WALL FILLER & TALL FILLER



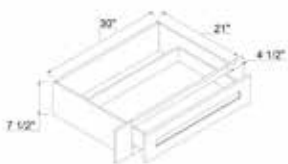
ITEM #	W	H	D
WF330	3	33	3/4
WF336	3	36	3/4
WF342	3	42	3/4
WF630	6	30	3/4
WF636	6	36	3/4
WF642	6	42	3/4
TF396	3	96	3/4
TF696	6	96	3/4

ARCHED VALANCE



PRODUCT #	W	H	D
VAL42	42	5 1/2	3/4
VAL48	48	5 1/2	3/4

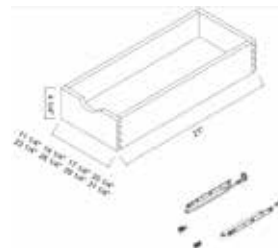
KNEE DRAWER



ITEM #	W	H	D
KD30/36	30	7 1/2	21

Sides trimmable to 30"

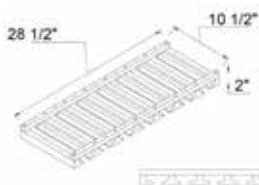
ROLL OUT TRAYS



Includes soft-close, full-extension undermount glides

ITEM #	W	H	D
RT15	11 1/4	4 1/4	21
RT18	14 1/4	4 1/4	21
RT21	17 1/4	4 1/4	21
RT24	20 1/4	4 1/4	21
RT27	23 1/4	4 1/4	21
RT30	26 1/4	4 1/4	21
RT33	29 1/4	4 1/4	21
RT36	32 1/4	4 1/4	21

STEM GLASS HOLDER



ITEM #	W	H	D
SGH30	28 1/2	10 1/2	2

FLOATING SHELVES



Comes with mounting brackets

ITEM #	W	H	D
FLS30-N	30	2 1/2	10
FLS36-N	36	2 1/2	10
FL30-W	30	2 1/2	10
FL36-W	36	2 1/2	10

TOUCH-UP KIT



TUK

SPRAY PAINT



SPAIN





TA Cabinetry Limited Warranty Policy

At TA Cabinetry, we pride ourselves on our commitment to quality craftsmanship. We believe that quality should endure, and although rare, any defects will be addressed with the following warranty policies.

WHO IS COVERED

This Warranty is extended to the original purchaser only and is non-transferable. It applies to residential use only and is not valid for commercial or outdoor use.

WARRANTY PERIOD

We offer a Five-Year Limited Warranty on our products, starting from the invoice date.

WHAT IS COVERED UNDER THIS WARRANTY

TA Cabinetry warrants its products to be free from defects in workmanship under normal household use. This Warranty specifically covers:

- Cabinet front frames
- Cabinet doors
- Cabinet back and side panels
- Shelves, tops, and bottoms
- Drawer fronts and drawer bodies

WHAT IS NOT COVERED UNDER THIS WARRANTY

This Warranty does not cover:

- Defects or damage due to improper installation, misuse, accidents, alterations, or improper care.
- Cabinetry not maintained or stored in a climate-controlled environment (extreme temperatures and humidity conditions are considered extreme).
- Cabinetry exposed to water, extreme high or low humidity.
- Natural characteristics of wood.
- Colorfastness of finishes.
- Damage caused by fire, flood, acts of God, intentional damages, or other uncontrollable events.
- Effects on color and/or finish due to abrasive cleaners, chlorine, acidic cleaners, scuffing sponges, or steel wool.
- Normal wear and tear.
- Labor costs, including installation, removal, or reinstallation of the product or defective parts.
- Transportation or shipping costs associated with this Warranty.



WARRANTY ACTIONS

In the event of a defect in the workmanship or materials of a product or product component during the warranty period, TA Cabinetry will replace the defective product or component. If replacement is not feasible, we may offer a refund of the original purchase price or provide a credit towards a similar product sold by us.

DISCLAIMER

Warped Doors

Wood naturally expands and contracts over time, so slight warping can be expected. Doors warped up to ¼” and moldings and panels warped up to 2” are not considered defective. Doors must be hung for at least three months before filing a warranty claim.

Glazed Finishes

Glazed finishes are applied by hand and designed to have an uneven appearance. Variations in the glaze are expected and not considered defects.

Joint Splits

Joint splits are common in painted wood cabinets due to seasonal changes in temperature and humidity, causing natural movement at the seams. This is not considered a defect.

Shrinkage of Center Panels

Center panels may expand and contract due to temperature and humidity changes. Defects cannot be claimed until three months after installation if shrinkage exceeds 1/8”.

Color & Grain Variations

Natural variations in color, texture, and grain are expected in stained cabinets and are not considered defects. Replacement parts may vary in color from the original.

Hinges and Slides

Hardware failure is uncommon and usually results from improper installation or adjustment. Replacement parts may differ in appearance from the originals.

This Limited Warranty is designed to ensure your satisfaction with TA Cabinetry products. We are committed to addressing any issues promptly and fairly within the terms outlined above.







OUR MISSION STATEMENT

At TA Cabinetry, our mission is to empower businesses by providing high-quality, innovative cabinetry solutions that drive success and satisfaction. We partner with builders, designers, and retailers to deliver exceptional products that combine functionality, craftsmanship, and style, tailored to meet the unique demands of their clients. Committed to exceptional service and lasting partnerships, we streamline the process from design to delivery, ensuring efficiency and reliability every step of the way. With a focus on continuous improvement and industry leadership, we strive to be the trusted partner that helps businesses thrive in an ever-evolving market.



CHARLOTTE, NC

1810 W Pointe Dr,
Suite A
Charlotte, NC 28214

CHICAGO, IL

2050 S Mt Prospect Rd,
Suite C
Des Plaines, IL 60018

COLUMBUS, OH

2201 Dividend Dr
Columbus, OH 43228

WASHINGTON, DC

7587 Montevideo Rd
Jessup, MD 20794

MORE LOCATIONS TO COME!



www.TACABINTRY.com



@tacabinetryinc